

## in-line fuse switch-disconnector 630 A (33718)



The picture may show a similar product.

### Description

Part No.: **33718** 000A

QUADRON®185Power

in-line fuse switch-disconnector 630 A

Size NH 3

size 3, 1-pole switchable

screw M12

for busbars 30, 40, 60, 80, 100, 120 x 10

### System

185Power

### Advantages of the product

Self-closing inspection holes are available in the cover.

Cover can be locked when closed.

**Product group** 12

**Subgroup** 45

pack size 1  
EAN 4021267337186

ETIM 5.0 EC001046  
ETIM 8.0 EC001046

## Approvals

### Standards

IEC 60947-1:2020  
IEC 60947-3:2020 AC ratings only

### Approvals

IEC (CB) , CCC



type number: QU185-3

CCC certificate: 2015010302773479

## Technical data

for fuse links size:	NH 3
fuse links acc. to standard:	IEC / HD 60269-2
permitted power dissipation of the fuse-link:	48 W
requirements for contact parts:	Fuse links with silver-plated contact pieces recommended. For fuse links with nickel-plated contact pieces, a reduction factor of 0.8 is to be observed.

### Details IEC

#### Standards

IEC 60947-1:2020  
IEC 60947-3:2020 AC ratings only

## Electrical data IEC

rated current (IEC): 630 A

rated voltage (IEC) AC: 690 V

rated isolation voltage  $U_i$  AC: 1000 V

rated surge voltage  $U_{imp}$ : 8 kV

Utilisation category AC (IEC 60947-3): AC-23B 630A/400V

AC-22B 630A/500V

AC-21B 500A/690V

cond. short-circuit current with fuses (AC): 65 kA / 800 V (315 A)

80 kA / 690 V (630 A)

100 kA / 500 V (630 A)

approved with fuse links of operation class: gG

power dissipation of the article:

The power dissipation at a typical load of 80 % results to 75.5 W.

(The power dissipation at full load would be 118.0 W.)

## Supplementary data IEC

The following values have been verified with tests under certain conditions. Please ask Wöhner for this conditions before designing your panel.

further utilisation category DC (IEC  
60947-3):

DC-20B

max. voltage between the fuses: 1000V

visible information required: Do not switch under  
load.

A fuse-combination unit acc. to IEC 60947-3 can only be operated at a higher voltage than its rated voltage, if it is used as a fuse-disconnector without breaking capacity, up to its max. rated insulation voltage and labelled as such.

min. permitted operation temperature -40°C

max. permitted operation temperature 55°C

min. permitted temperature for transport and storage -40°C

Degree of protection IP20 at front, degree of protection near terminal depends on installation

## Mechanical data

W x H x D: 100 x 670 x 189  
weight: 574.0 kg/100  
poles: 3-pole  
for busbars: 30, 40, 60, 80, 100, 120 x 10

CT can be integrated in the device: ja  
CT can be integrated in the CT module: ja  
front degree of protection: IP20  
degree of protection when open: IP10

## Terminal points

screw M12 :  
Md 30 Nm

## Material properties

halogen-free: Yes

## Application notes

A fuse-combination unit acc. to IEC 60947-3 can only be operated at a higher voltage than its rated voltage, if it is used as a fuse-disconnector without breaking capacity, up to its max. rated insulation voltage and labelled as such.

The terminal compartment cover 33733 is always needed for the connection at top and when using cable lugs.

permitted power dissipation of the fuse-link: 48 W

requirements for contact parts: Fuse links with silver-plated contact pieces recommended.

For fuse links with nickel-plated contact pieces, a reduction factor of 0.8 is to be observed.

# Accessories

## accessories for mounting



### **33738 000A**

CrossLink® terminal clamp  
for busbar systems with CrossLink® touch-safe protection  
size 1 - 3



### **33740 000A**

terminal clamp  
for busbar systems without protection modules  
size 1 - 3

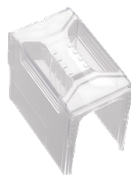
## connection accessories



### **33736 000A**

box terminal  
for Cu / Al 120 - 300 mm<sup>2</sup>  
size 1-3

## covers



### **33733 000A**

terminal compartment cover  
universal for NH-rails size 1 - 3 and connection rail 800 A  
size 1- 3



### **33758 000A**

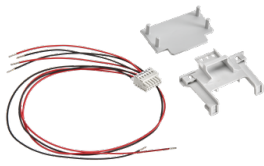
lateral bearing strip  
for front covers  
size 00 - 3



### **33761 000A**

rear touch-safe protection cover  
rear protection for Phase L1

connection cable



**37902 000A**

Connection kit LTL NH1-3 for RJ12 cable  
spring connector strip with 6 x 0.5 mm<sup>2</sup> leads  
for internal wiring of the transformers and connection of the RJ12 cable  
**NEW**

**wöhner**

**37903 000A**

Wago connector components  
for independent assembly of RJ12 cables  
**NEW**

**wöhner**

**37904 000A**

RJ12 lead with pin connector strip Wago  
with leads RJ12, 3.00 m  
to connect prewired in-line fuse switch-disconnectors with the current  
extension module 37100  
**NEW**

**wöhner**

**37905 000A**

RJ12 lead with pin connector strip Wago  
with leads RJ12, 1.5 m  
to connect prewired in-line fuse switch-disconnectors with the current  
extension module 37100  
**NEW**

**wöhner**

**37906 000A**

RJ12 lead with pin connector strip Wago  
with leads RJ12, 0.6 m  
to connect prewired in-line fuse switch-disconnectors with the current  
extension module 37100  
**NEW**

**wöhner**

**37907 000A**

RJ12 lead with pin connector strip Wago  
with lead RJ12, 0.3 m  
to connect prewired in-line fuse switch-disconnectors with the current  
extension module 37100  
**NEW**

further accessories



**33156 000**

pilot switch

changeover 250 V AC / 5 A, 30 V DC / 4 A

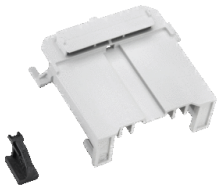


**33762 000A**

universal current transformer module

for mounting in the connection compartment

size 1 - 3

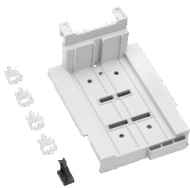


**33768 000A**

plug support with mounting rail

for CT wiring

size 1 - 3



**33769 000A**

component support with mounting rails

for fuse monitor and CT wiring

size 1 - 3

measuring transformers 333mV



**37307 000A**

measuring transformer 600 A / 333 mV

Size CT2

class 0.5s

when used on busbars or in 630 A adapters, article 37900 is additionally required

**NEW**



**37296 000A**

measuring transformer 200 A / 333 mV

Size CT2

class 0.5

when used on busbars or in 630 A adapters, article 37900 is additionally required

**NEW**



**37304 000A**

measuring transformer 250 A / 333 mV

Size CT2

class 0.5s

when used on busbars or in 630 A adapters, article 37900 is additionally required

**NEW**



**37289 000A**

measuring transformer 200 A / 333 mV

Size CT2

class 1

when used on busbars or in 630 A adapters, article 37900 is additionally required

**NEW**



**37298 000A**

measuring transformer 400 A / 333 mV

Size CT2

class 0.5

when used on busbars or in 630 A adapters, article 37900 is additionally required

**NEW**



**37305 000A**

measuring transformer 400 A / 333 mV

Size CT2

class 0.5s

when used on busbars or in 630 A adapters, article 37900 is additionally required

**NEW**



**37293 000A**

measuring transformer 600 A / 333 mV

Size CT2

class 1

when used on busbars or in 630 A adapters, article 37900 is additionally required

**NEW**



**37290 000A**

measuring transformer 250 A / 333 mV

Size CT2

class 1

when used on busbars or in 630 A adapters, article 37900 is additionally required

**NEW**



**37303 000A**

measuring transformer 200 A / 333 mV

Size CT2

class 0.5s

when used on busbars or in 630 A adapters, article 37900 is additionally required

**on request**



**37292 000A**

measuring transformer 500 A / 333 mV

Size CT2

class 1

when used on busbars or in 630 A adapters, article 37900 is additionally required

**NEW**



**37306 000A**

measuring transformer 500 A / 333 mV

Size CT2

class 0.5s

when used on busbars or in 630 A adapters, article 37900 is additionally required

**NEW**



**37297 000A**

measuring transformer 250 A / 333 mV

Size CT2

class 0.5

when used on busbars or in 630 A adapters, article 37900 is additionally required

**NEW**

**37291 000A**

measuring transformer 400 A / 333 mV

Size CT2

class 1

when used on busbars or in 630 A adapters, article 37900 is additionally required

**NEW**

**37299 000A**

measuring transformer 500 A / 333 mV

Size CT2

class 0.5

when used on busbars or in 630 A adapters, article 37900 is additionally required

**NEW**

**37300 000A**

measuring transformer 600 A / 333 mV

Size CT2

class 0.5

when used on busbars or in 630 A adapters, article 37900 is additionally required

**NEW**

### current transformers class 1

**37212 000A**

current transformer 200 A / 5 A

Size CT2

2.5 VA / class 1

when used on busbars or in 630 A adapters, article 37900 is additionally required

**37213 000A**

current transformer 250 A / 5 A

Size CT2

2.5 VA / class 1

when used on busbars or in 630 A adapters, article 37900 is additionally required



**37214 000A**

current transformer 400 A / 5 A

Size CT2

2.5 VA / class 1

when used on busbars or in 630 A adapters, article 37900 is additionally required



**37215 000A**

current transformer 500 A / 5 A

Size CT2

2.5 VA / class 1

when used on busbars or in 630 A adapters, article 37900 is additionally required



**37216 000A**

current transformer 600 A / 5 A

Size CT2

2.5 VA / class 1

when used on busbars or in 630 A adapters, article 37900 is additionally required

current transformers class 0.5



**37219 000A**

current transformer 200 A / 5 A

Size CT2

1 VA / class 0.5

when used on busbars or in 630 A adapters, article 37900 is additionally required



**37220 000A**

current transformer 250 A / 5 A

Size CT2

2.5 VA / class 0.5

when used on busbars or in 630 A adapters, article 37900 is additionally required



**37221 000A**

current transformer 400 A / 5 A

Size CT2

2.5 VA / class 0.5

when used on busbars or in 630 A adapters, article 37900 is additionally required

required



**37222 000A**

current transformer 500 A / 5 A

Size CT2

2.5 VA / class 0.5

when used on busbars or in 630 A adapters, article 37900 is additionally required



**37223 000A**

current transformer 600 A / 5 A

Size CT2

2.5 VA / class 0.5

when used on busbars or in 630 A adapters, article 37900 is additionally required



**37232 000A**

current transformer 200 A / 5 A, with decl. of conformity

Size CT2

1 VA / class 0.5

when used on busbars or in 630 A adapters, article 37900 is additionally required



**37233 000A**

current transformer 250 A / 5 A, with decl. of conformity

Size CT2

2.5 VA / class 0.5

when used on busbars or in 630 A adapters, article 37900 is additionally required



**37234 000A**

current transformer 400 A / 5 A, with decl. of conformity

Size CT2

2.5 VA / class 0.5

when used on busbars or in 630 A adapters, article 37900 is additionally required



### **37235 000A**

current transformer 500 A / 5 A, with decl. of conformity

Size CT2

2.5 VA / class 0.5

when used on busbars or in 630 A adapters, article 37900 is additionally required

current transformers class 0.5s



### **37226 000A**

current transformer 250 A / 5 A

Size CT2

1 VA / class 0.5s

when used on busbars or in 630 A adapters, article 37900 is additionally required

**stock sale**



### **37227 000A**

current transformer 400 A / 5 A

Size CT2

2.5 VA / class 0.5s

when used on busbars or in 630 A adapters, article 37900 is additionally required



### **37228 000A**

current transformer 500 A / 5 A

Size CT2

2.5 VA / class 0.5s

when used on busbars or in 630 A adapters, article 37900 is additionally required

**stock sale**



### **37229 000A**

current transformer 600 A / 5 A

Size CT2

2.5 VA / class 0.5s

when used on busbars or in 630 A adapters, article 37900 is additionally required

**37236 000A**

current transformer 250 A / 5 A, with decl. of conformity

Size CT2

1 VA / class 0.5s

when used on busbars or in 630 A adapters, article 37900 is additionally required

**stock sale**

**37237 000A**

current transformer 400 A / 5 A, with decl. of conformity

Size CT2

2.5 VA / class 0.5s

when used on busbars or in 630 A adapters, article 37900 is additionally required

**37238 000A**

current transformer 500 A / 5 A, with decl. of conformity

Size CT2

2.5 VA / class 0.5s

when used on busbars or in 630 A adapters, article 37900 is additionally required

<https://pim.woehner.de/EN/EN/1000156566>